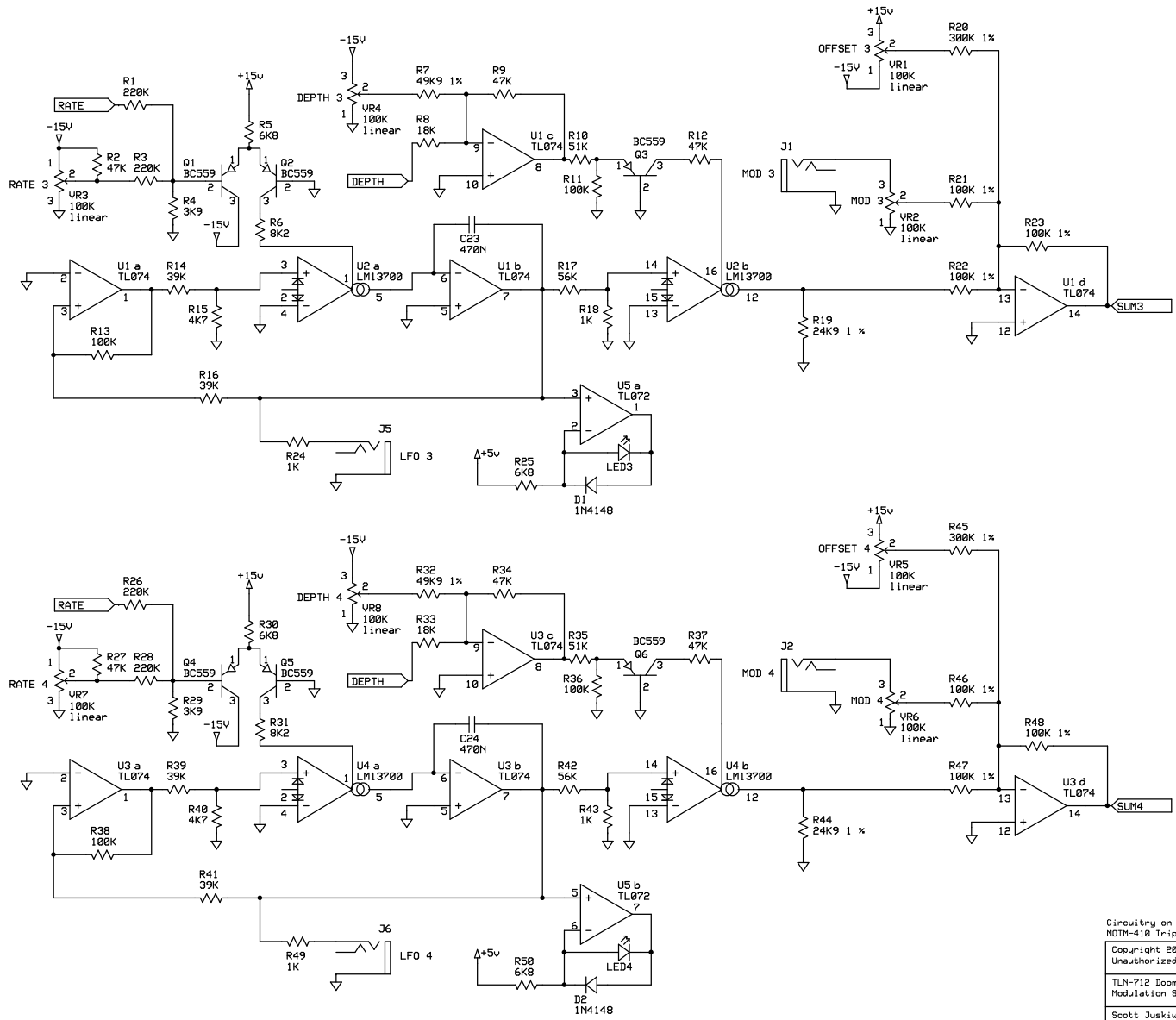


Circuitry on this page is based on the LFO from the
 MOTM-410 Triple Resonant Filter (Synthesis Technology 1999)

Copyright 2007, The Tellur Corporation
 Unauthorized Duplication Forbidden

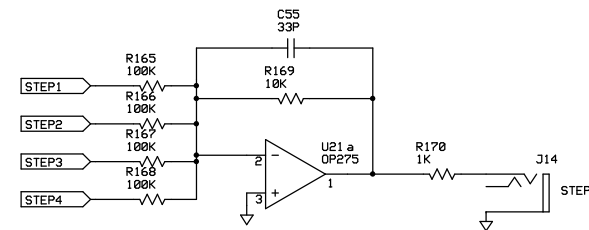
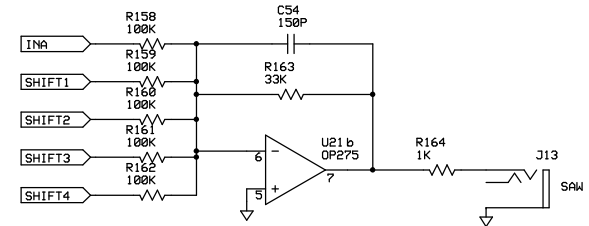
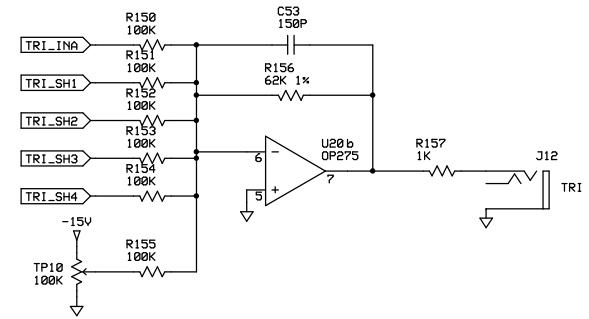
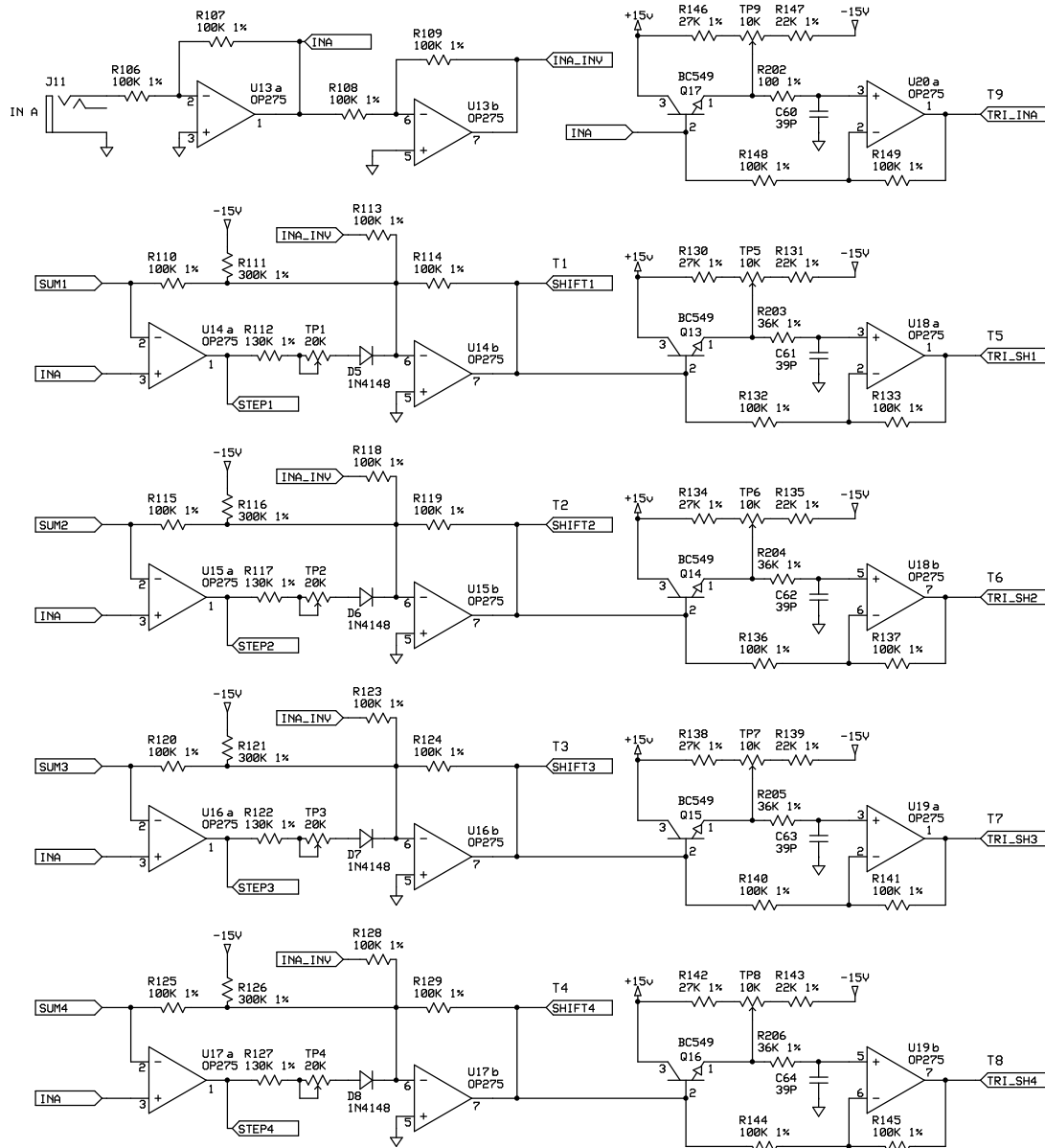
TLN-712 Doomsday Machine
 Modulation Sources 1-2



Circuitry on this page is based on the LFO from the
 MOTM-410 Triple Resonant Filter (Synthesis Technology 1999)

Copyright 2007, The Tellur Corporation
 Unauthorized Duplication Forbidden

TLN-712 Doomsday Machine
 Modulation Sources 3-4



Circuitry on this page is based on the Multi-Phase Waveform Animator by Bernie Hutchins and Lester Ludwig (Electronotes ENW07 and ENW108)

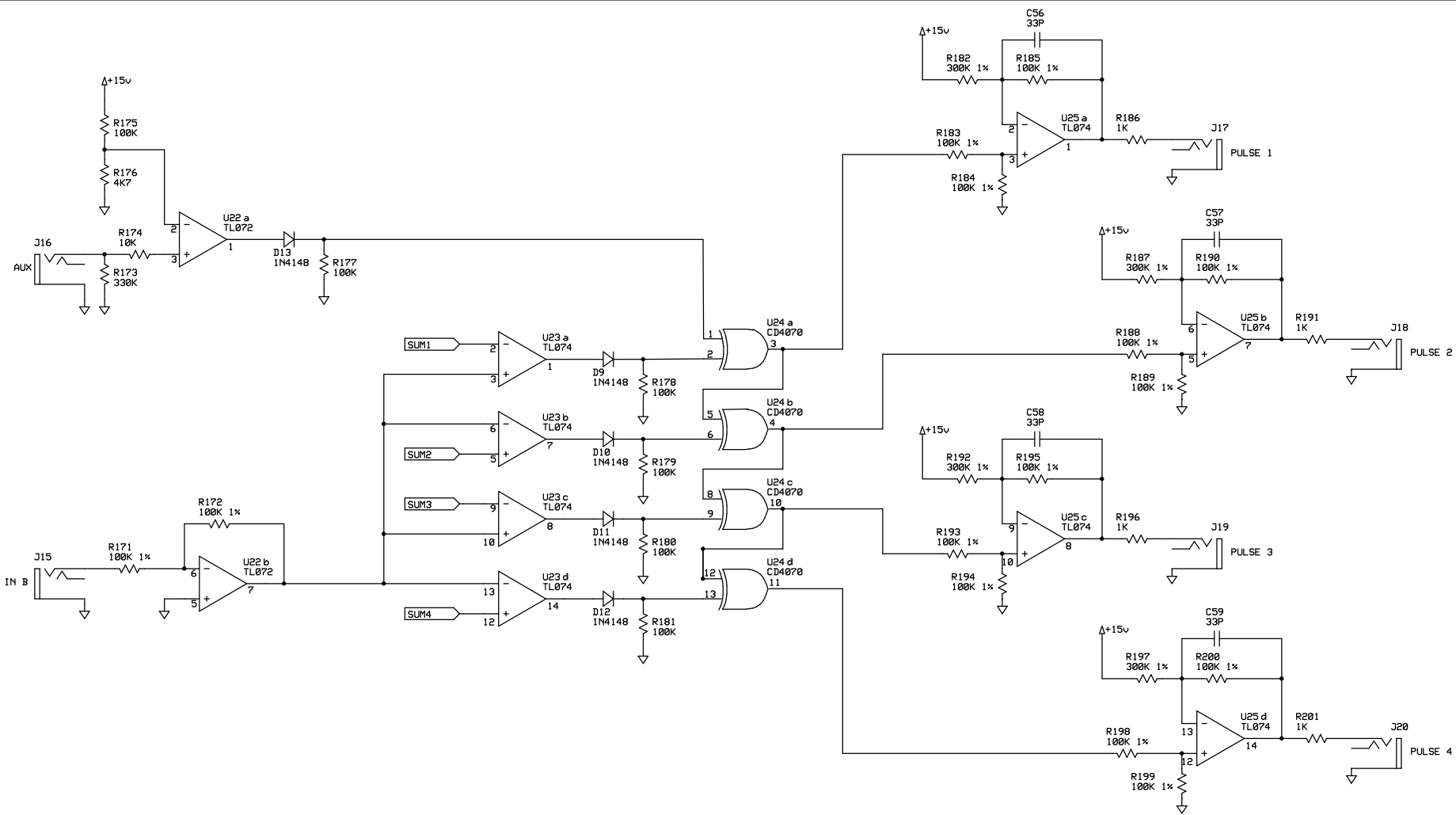
Copyright 2007, The Tellur Corporation
Unauthorized Duplication Forbidden

TLN-712 Doomsday Machine
Thaloron Radiation Emitter

Scott Juskiw
scott@tellur.com

Rev 1.0
2007-04-01

Page 3 of 5



Circuitry on this page is based on
 Craig Anderson's Pulse Width Multiplier (Polyphony Jan-Feb 1981)

Copyright 2007, The Tellun Corporation
 Unauthorized Duplication Forbidden

TLN-712 Doomsday Machine
 Cascading Biogenic Pulse

Scott Juskiw scott@tellun.com	Rev 1.0 2007-04-01	Page 4 of 5
----------------------------------	-----------------------	-------------

