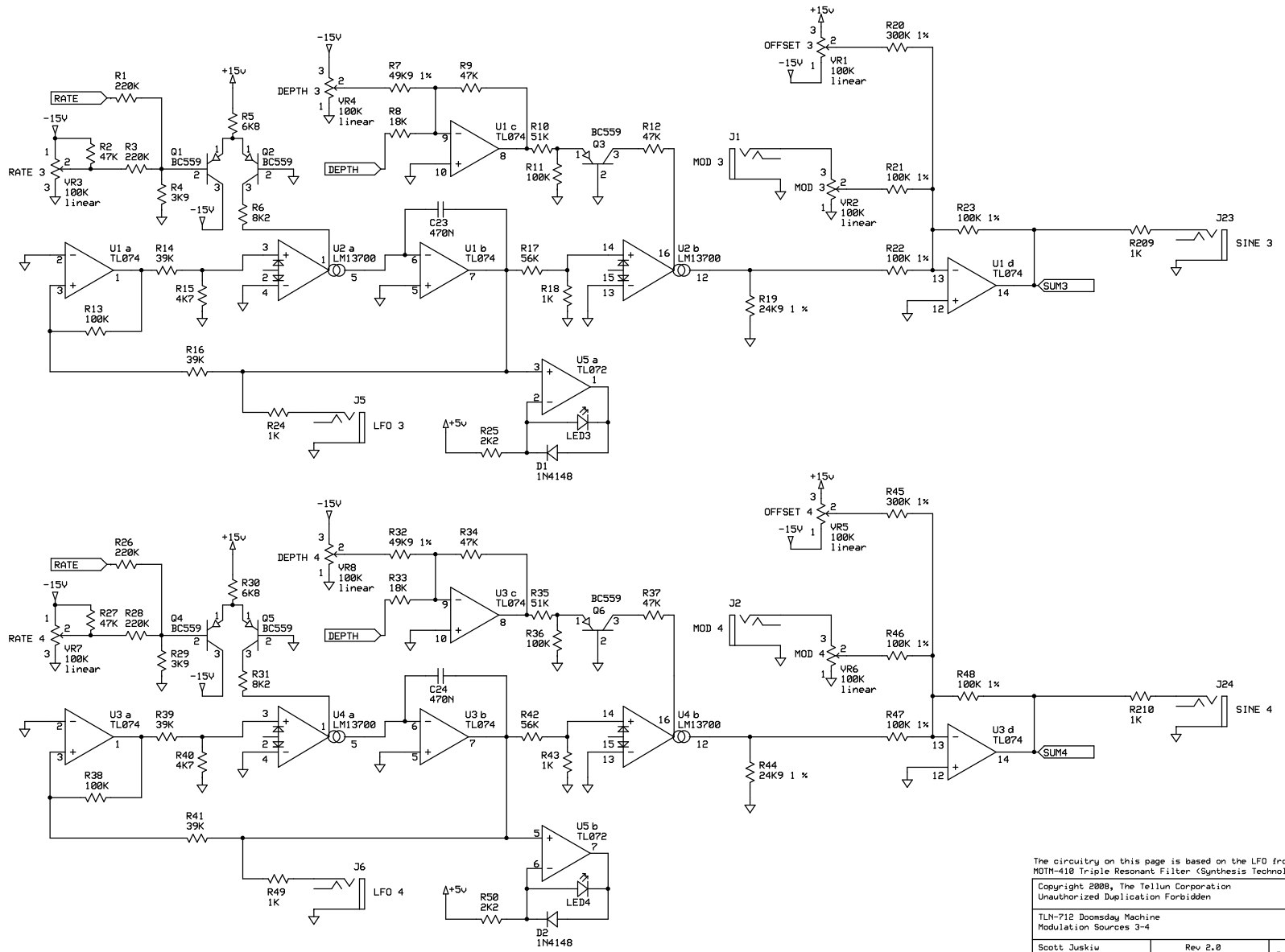


The circuitry on this page is based on the LFO from the  
 MOTH-410 Triple Resonant Filter (Synthesis Technology 1999)

Copyright 2008, The Tellur Corporation  
 Unauthorized Duplication Forbidden

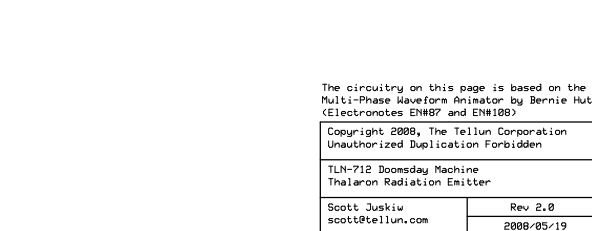
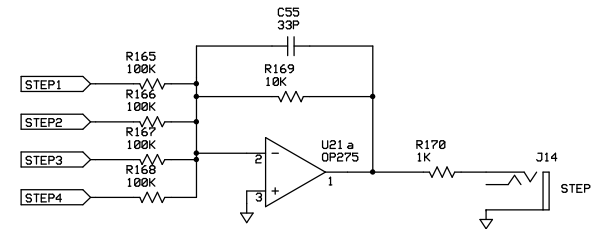
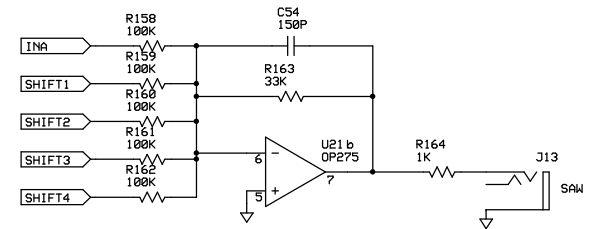
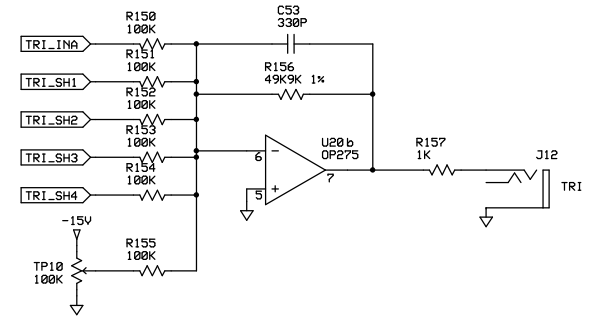
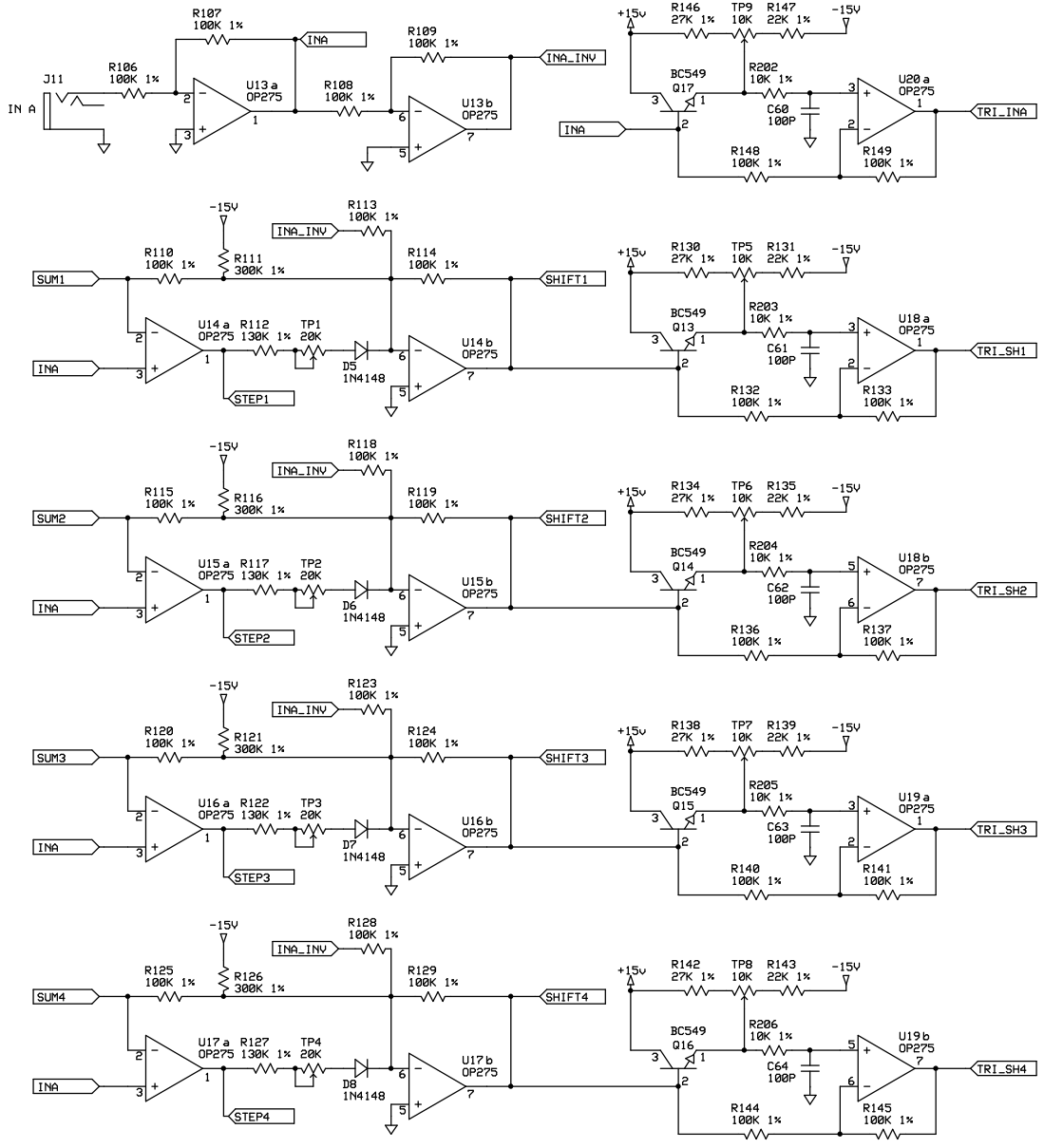
TLN-712 Doomsday Machine  
 Modulation Sources 1-2



The circuitry on this page is based on the LFO from the  
 MOTH-410 Triple Resonant Filter (Synthesis Technology 1999)

Copyright 2008, The Tellur Corporation  
 Unauthorized Duplication Forbidden

TLN-712 Doomsday Machine  
 Modulation Sources 3-4

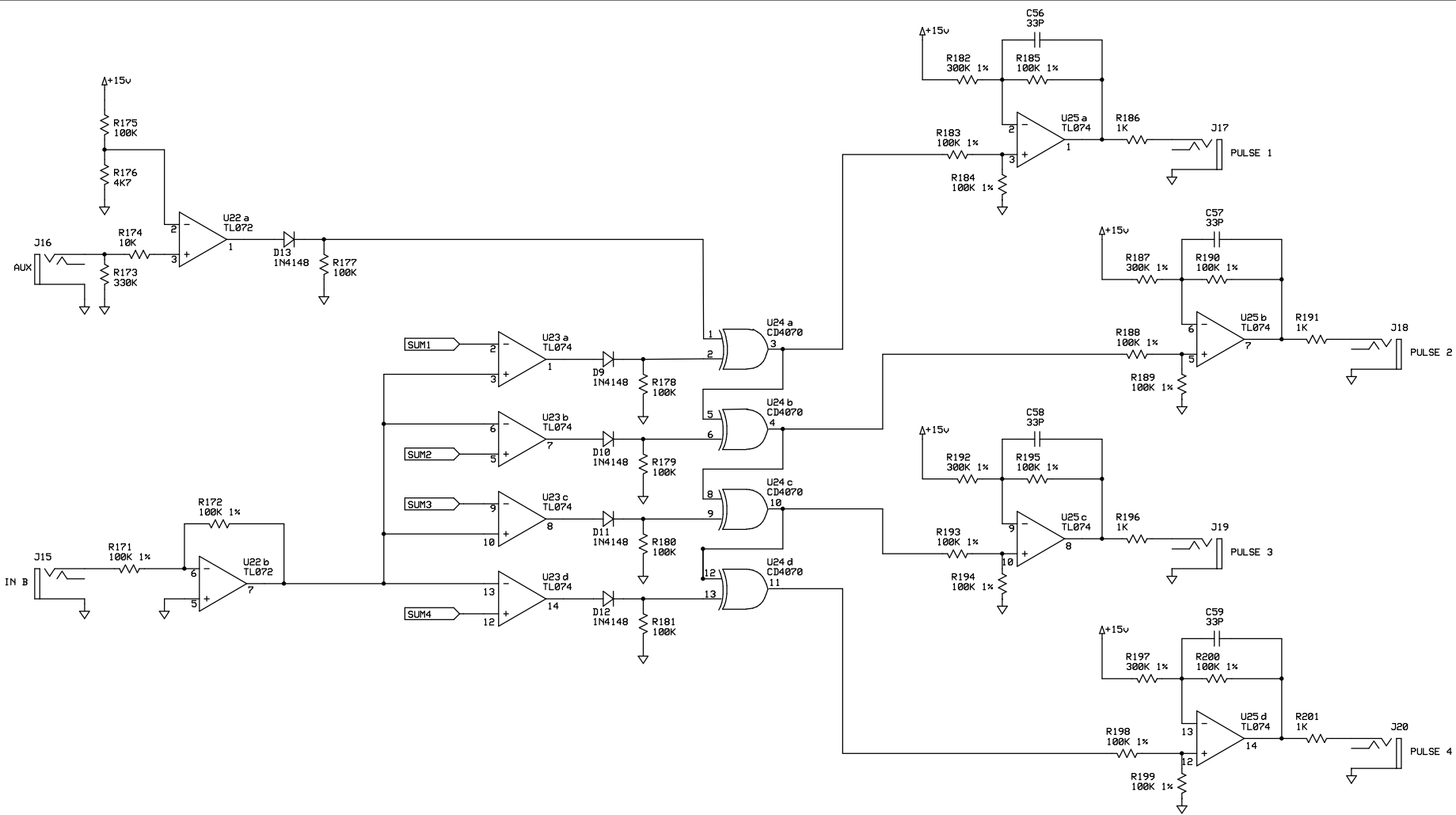


The circuitry on this page is based on the Multi-Phase Waveform Animation by Bernie Hutchins and Lester Ludwig (Electronics ENHSP and ENH183)

Copyright 2008, The Tellur Corporation  
Unauthorized Duplication Forbidden

TLN-712 Doomsday Machine  
Thaloron Radiation Emitter

|                                  |                       |             |
|----------------------------------|-----------------------|-------------|
| Scott Juskiw<br>scott@tellur.com | Rev 2.0<br>2008/05/19 | Page 3 of 5 |
|----------------------------------|-----------------------|-------------|



The circuitry on this page is based on  
 Craig Anderson's Pulse Width Multiplier (Polyphony Jan-Feb 1981)

Copyright 2008, The Tellur Corporation  
 Unauthorized Duplication Forbidden

TLN-712 Doomsday Machine  
 Cascading Biogenic Pulse

|                                  |                       |             |
|----------------------------------|-----------------------|-------------|
| Scott Juskiw<br>scott@tellur.com | Rev 2.0<br>2008-05-19 | Page 4 of 5 |
|----------------------------------|-----------------------|-------------|

